

CREATIVE AWL

leather patterns

**EMILY
BACKPACK**

PREPARED BY:

Patryk Ku,
www.CreativeAwl.com



**PLEASE
READ!**

If it wasn't for your support, this pattern wouldn't have come into being, thanks! If you already post pictures of your bag in the social media, I would be invariably glad if you would mention the author. I also encourage you to share your work on our facebook group.

All rights reserved. No content may be shared or reproduced. If you would like to share it, please recommend our facebook group or <https://www.creativeawl.com>

Thank you and have fun!

Patryk

LET'S GO:

PRINT THE PATTERN

01

- Open your pattern in Adobe Acrobat Reader. Set up options of your printer on A4 paper with 0 margins (if needed).
- Every page has a measure - check does it fit.
- Every printed page **MUST HAVE** a border around! If doesn't - move paper left/ right and print again and check the settings

02

VIDEO TUTORIAL:

https://youtu.be/m7Ui_b7ezks

Cutting patterns:

https://youtu.be/2TNUI_TIk64

03

GIVE A SMILE TO OTHER PEOPLE!

Give a ready product to you family or freind. Give them a smile :)))

Also Check www.CreativeAwl.com for more patterns

04

JOIN OUR FB GROUP

Go there to share your work. Also get more DIY&ideas. We will support you & answer all questions.

<https://www.facebook.com/groups/CreativeAwlPatterns>

YOU NEED

TOOLS

- sharp knife
- 1-1,5 and 3, 4, 8, 10mm hole punchers
- hammer
- 2 needles
- paper tape
- a home printer

MATERIALS

- about 0,4 square meter of leather (4 -6oz)
- 0,8mm waxed thread
- few rivets
- 4x 20mm d-rings
- 4x 20mm belt buckle
- 1 x 25mm belt buckle
- 1 x 14mm magnetic closure



SHARE YOUR WORK

<https://www.facebook.com/groups/CreativeAwlPatterns>

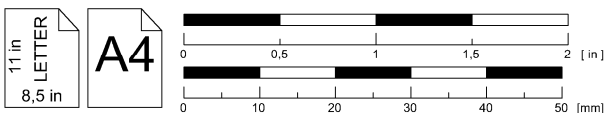
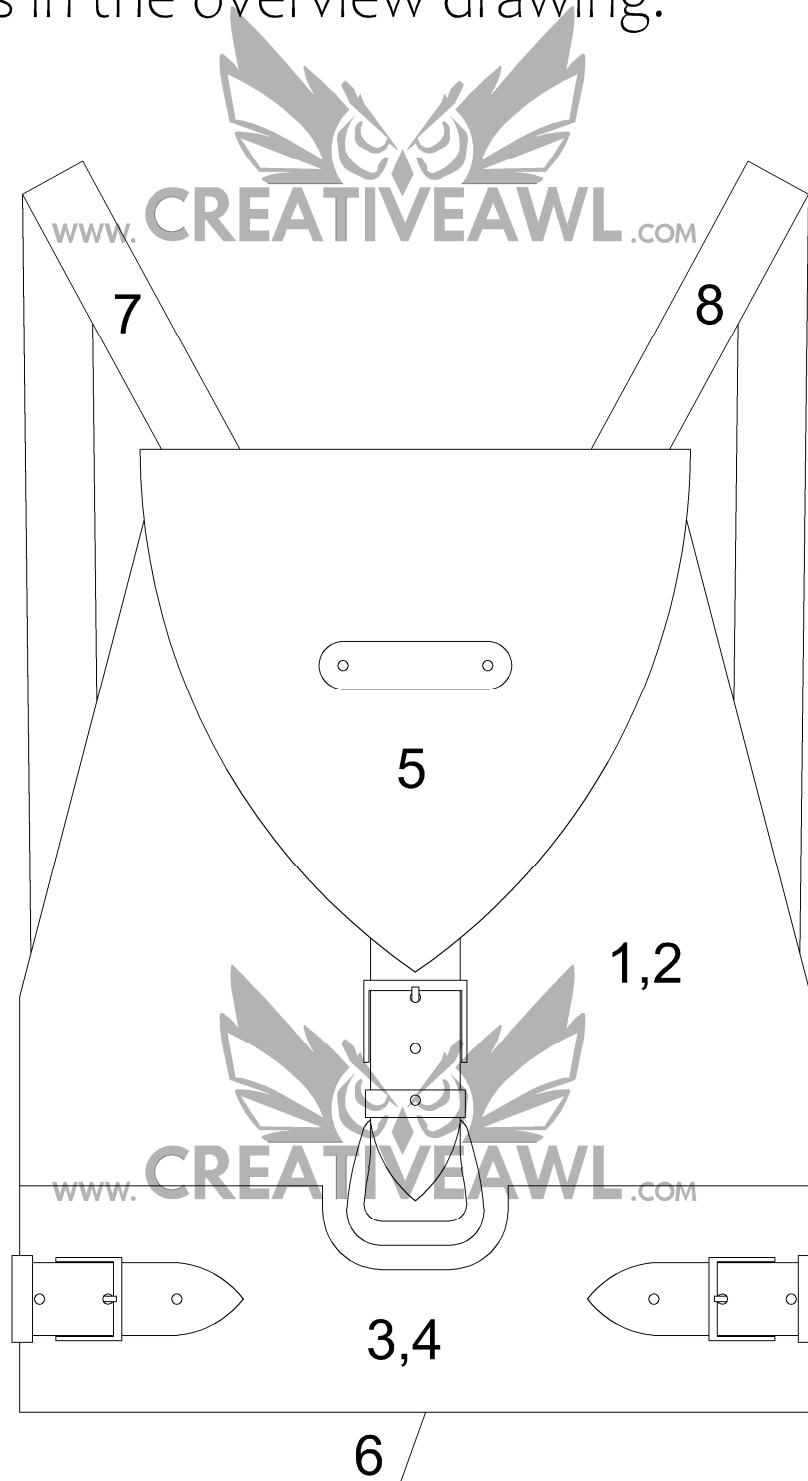
If you got ANY problem,- don't be shy to ask directly on Etsy or facebook

Emily backpack:

pages 5 - 16

-The number in the circle shows which holes are to be connected. Example: ①

-Numbers 1, 2, 3 (...) without a circle indicate where the piece lies in the overview drawing.

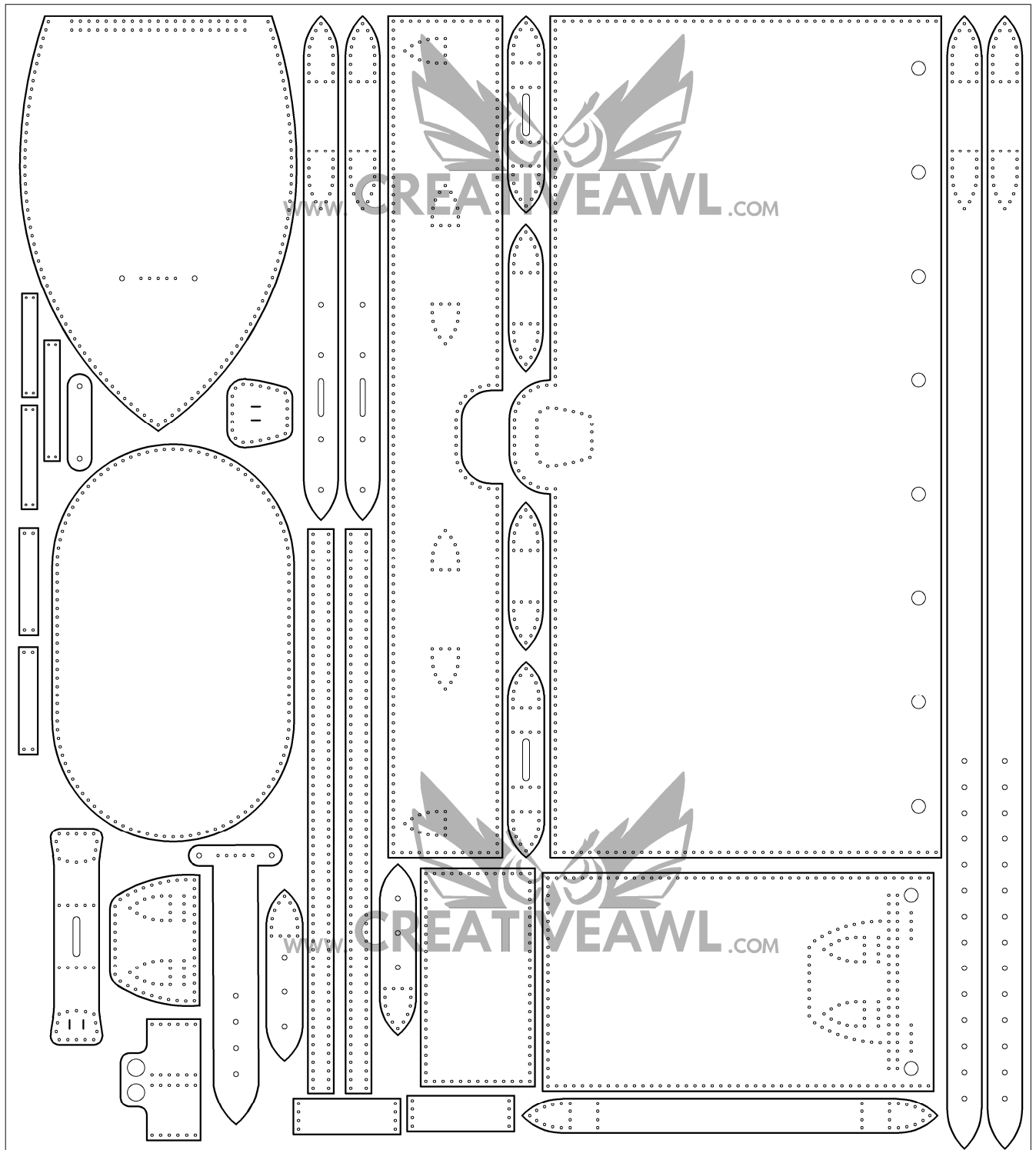
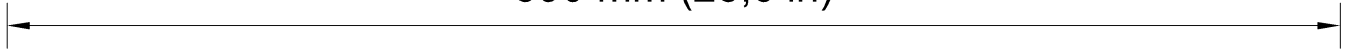


Sketch drawing

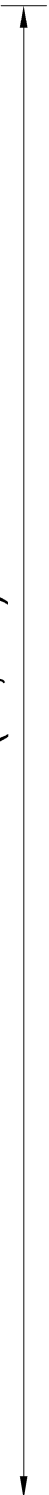
Leather needed for a Emily
backpack:

about 0,40 m2

590 mm (23,6 in)



665 mm (26,6 in)

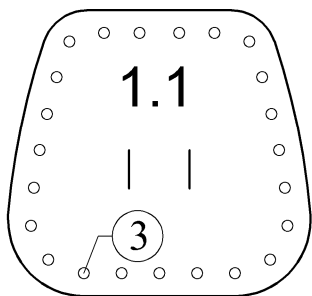


Sketch drawing
Bill of materials

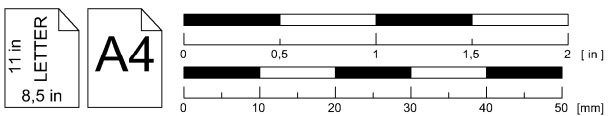


1/1

p1 



1



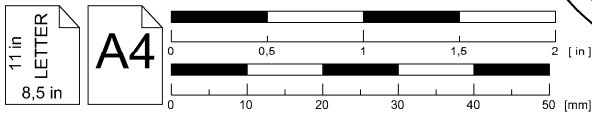
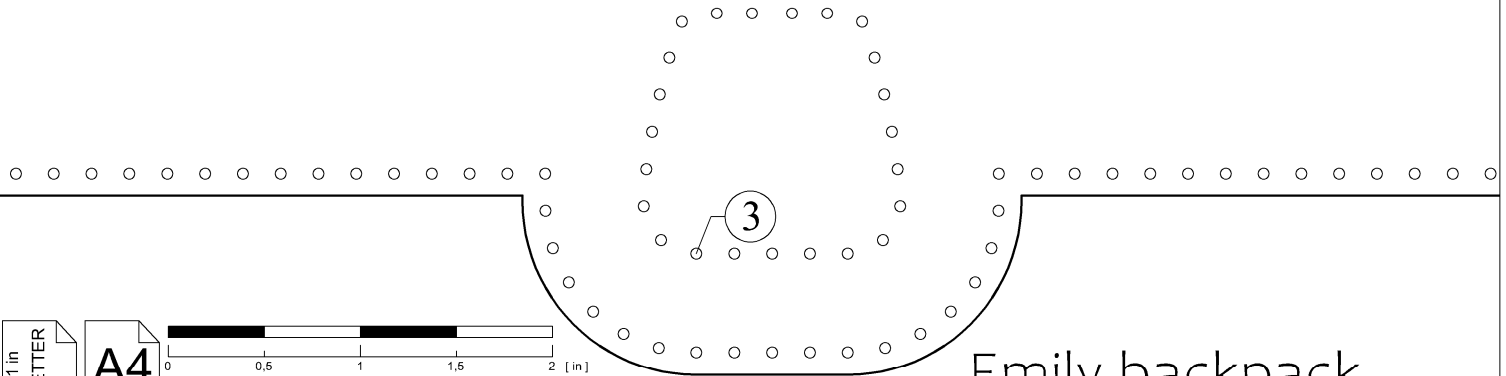
Emily backpack



p1

1/2

p2



Emily backpack

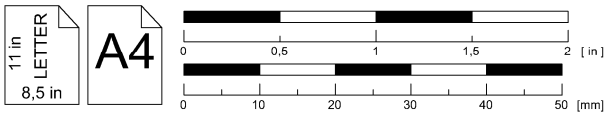
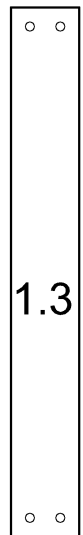
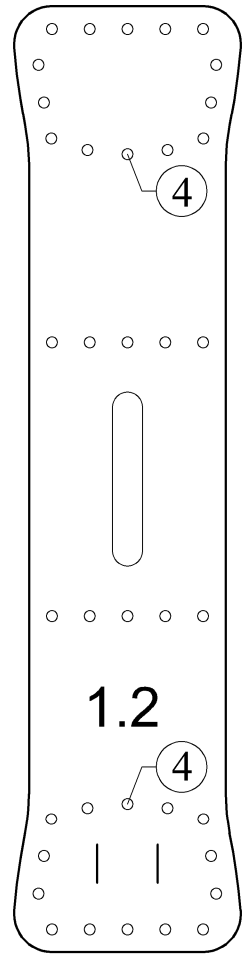


p2

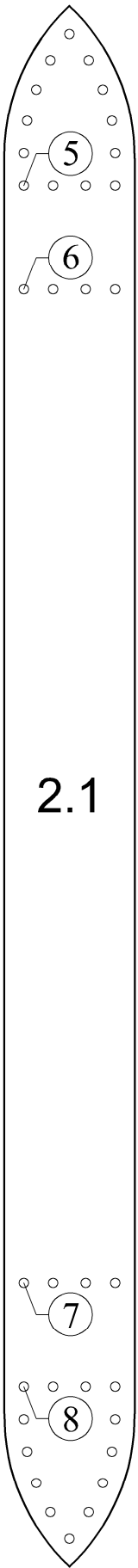
1/3



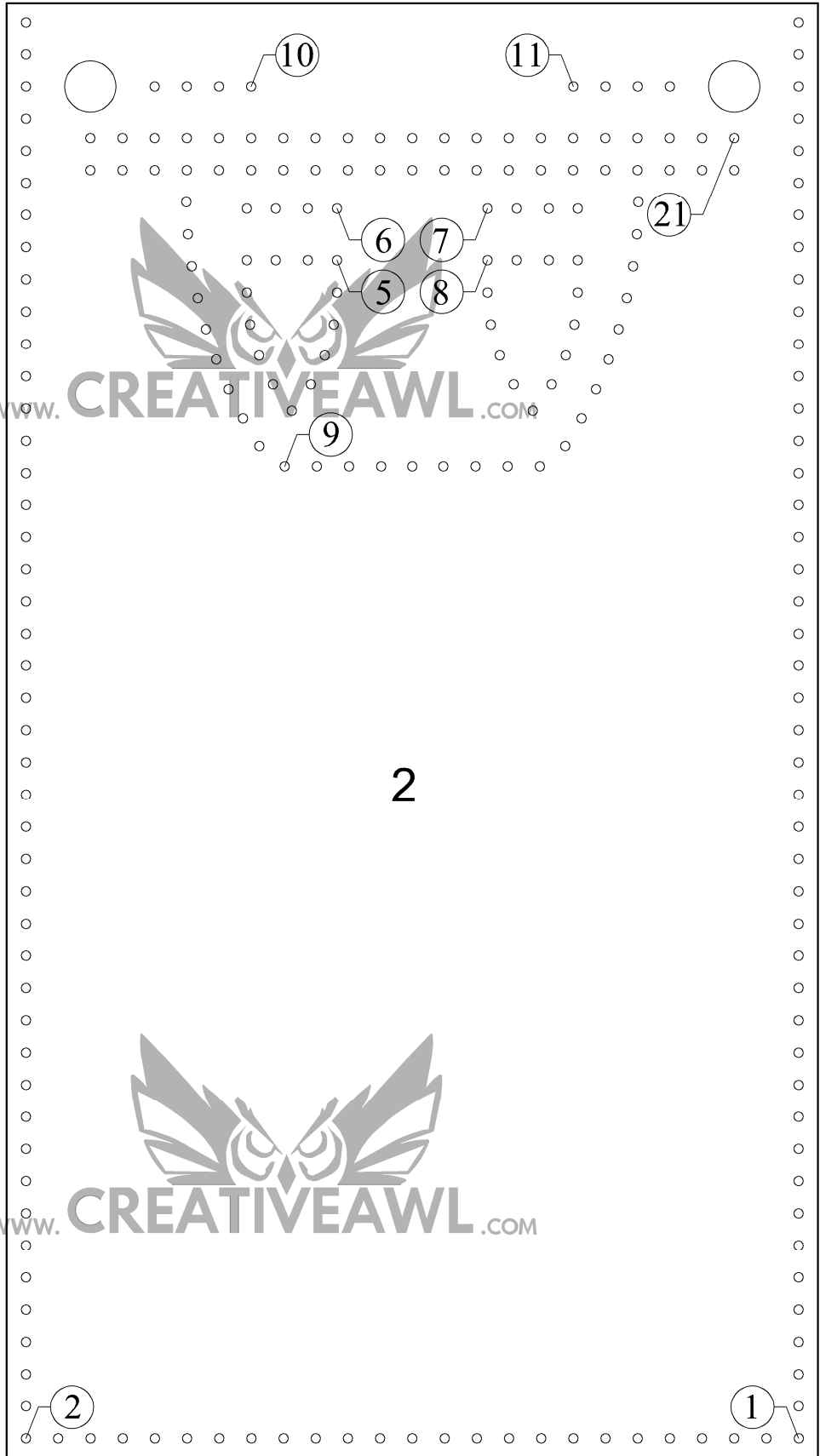
2



Emily backpack



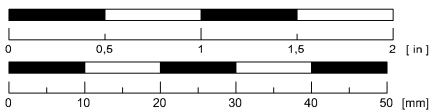
2.1



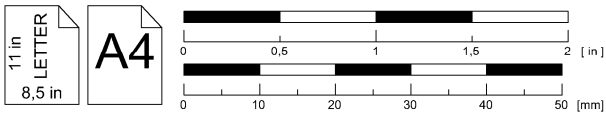
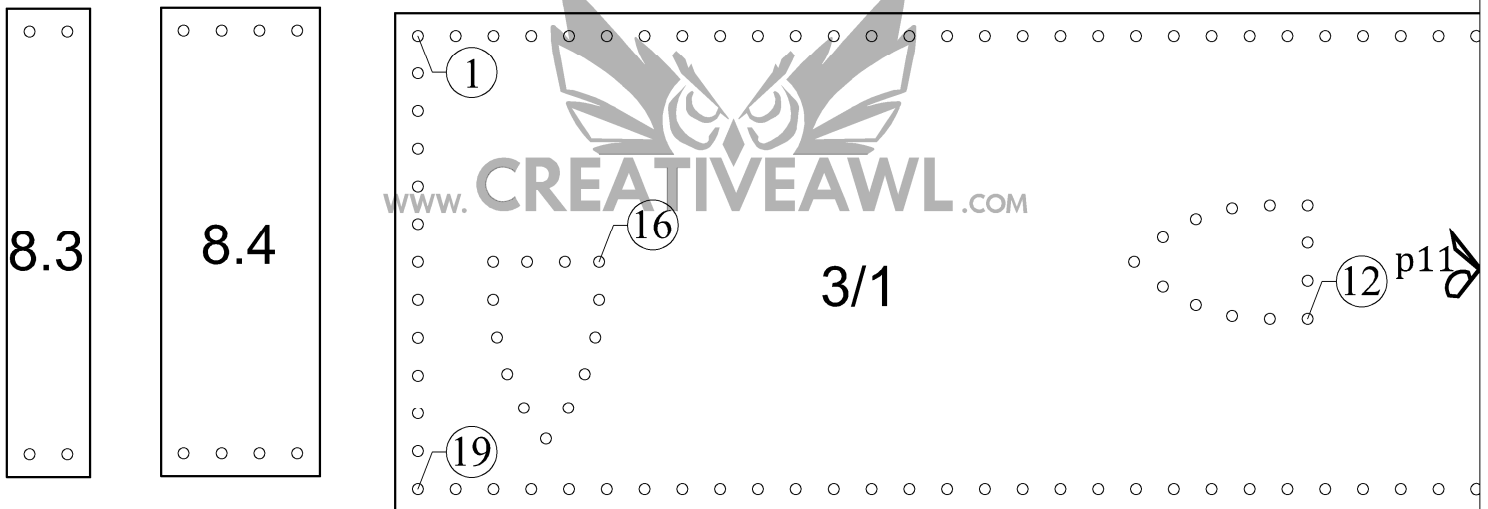
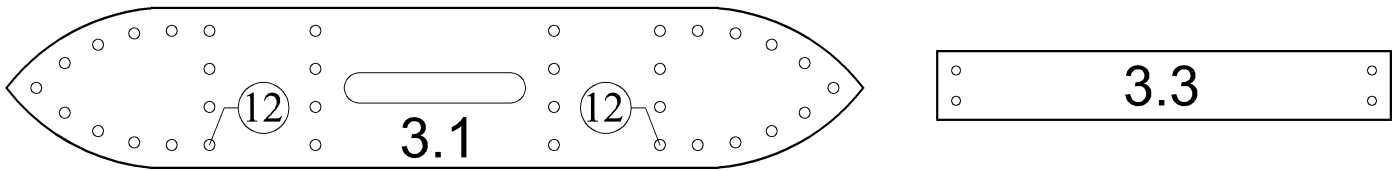
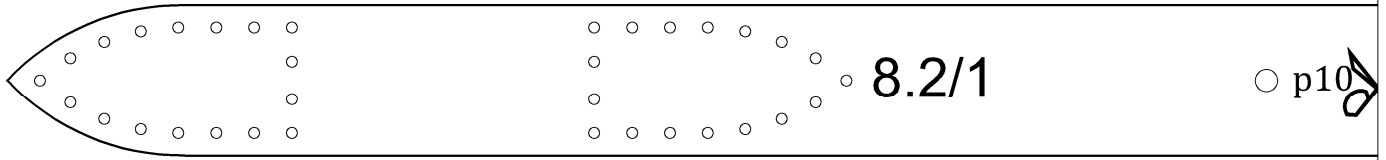
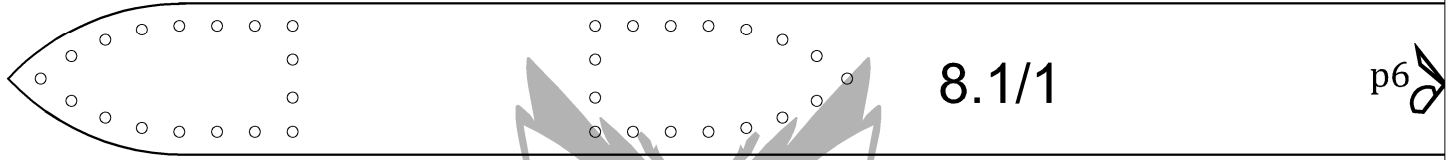
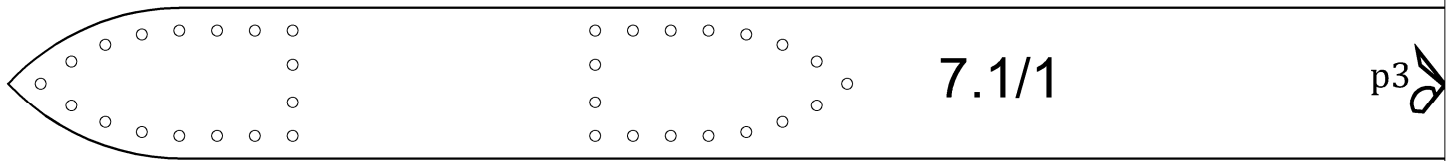
2

11 in
LETTER
8,5 in

A4



Emily backpack



Emily backpack

p3

7.1/2

p4

p6

8.1/2

p7

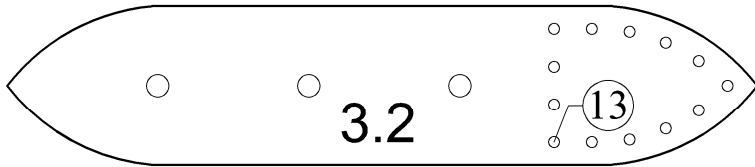
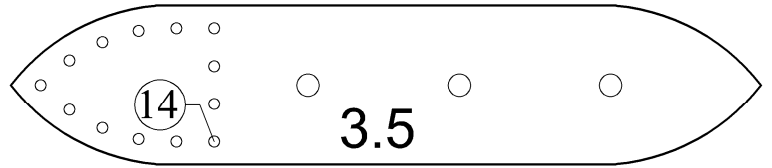
p9

www.CREATIVEAWL.COM

7.2/2

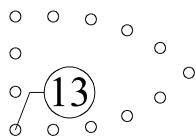
p10

8.2/2

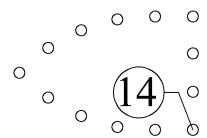


p11

www.CREATIVEAWL.COM



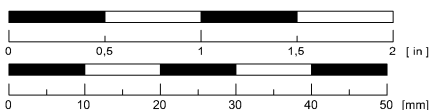
3/2



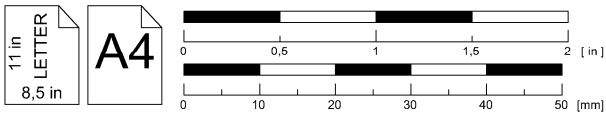
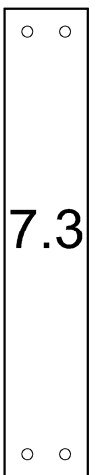
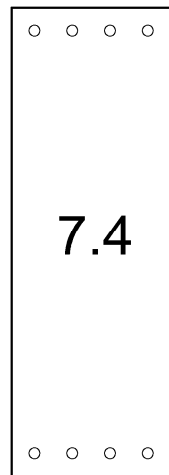
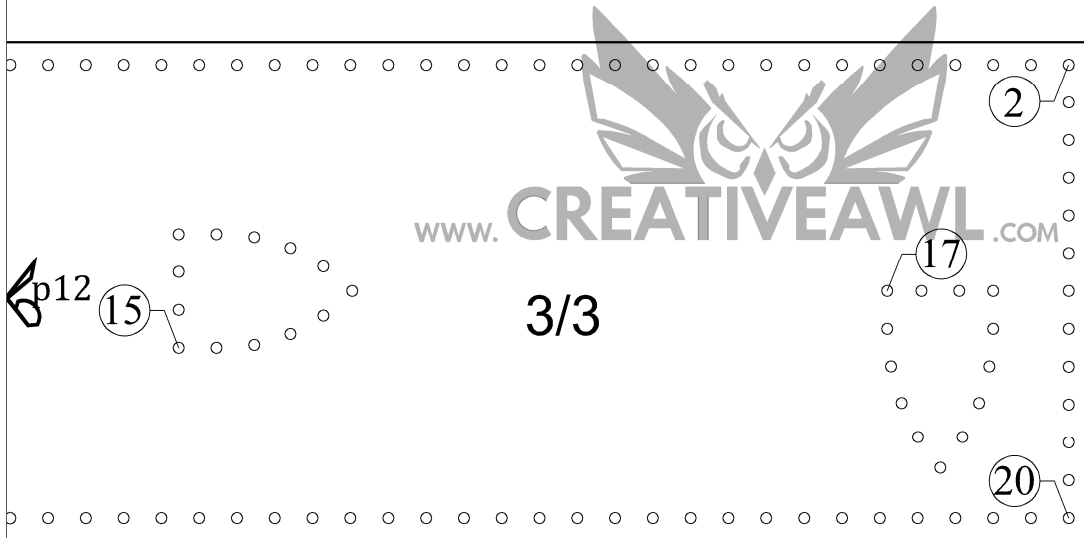
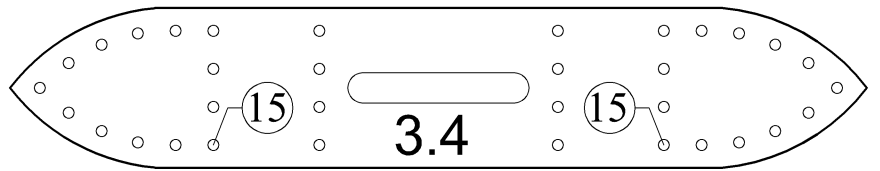
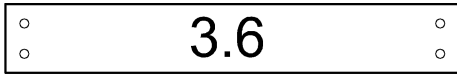
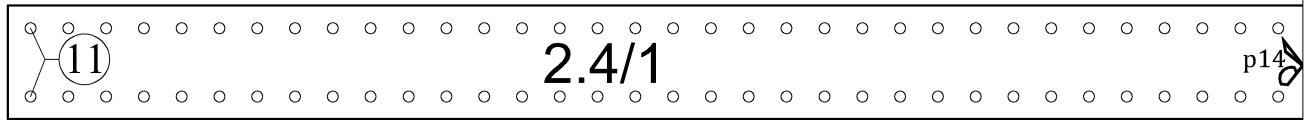
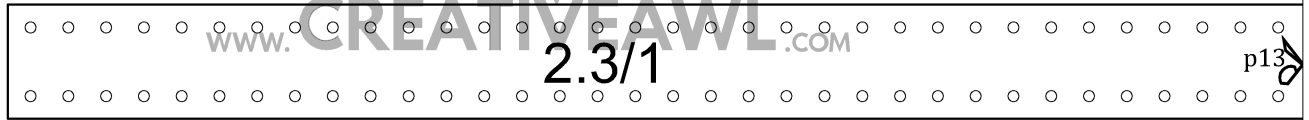
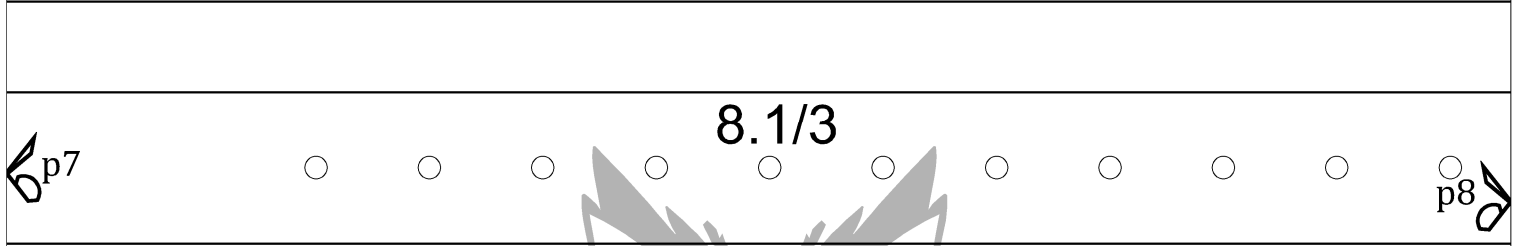
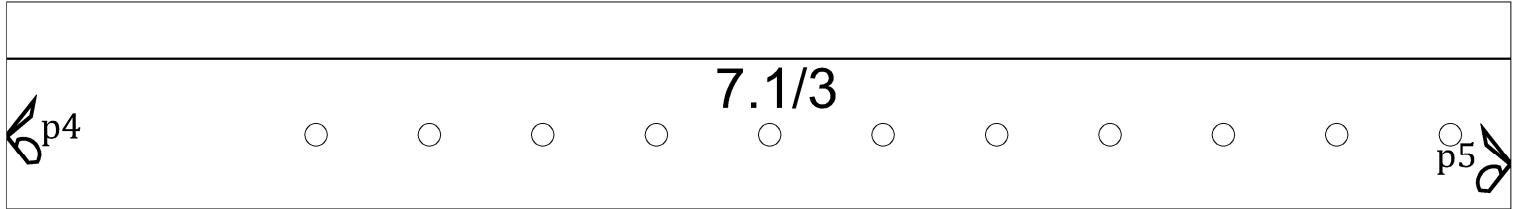
p12

11 in
LETTER
8.5 in

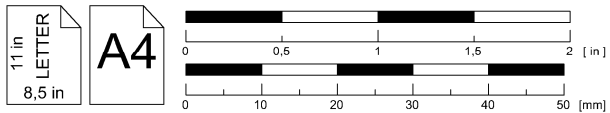
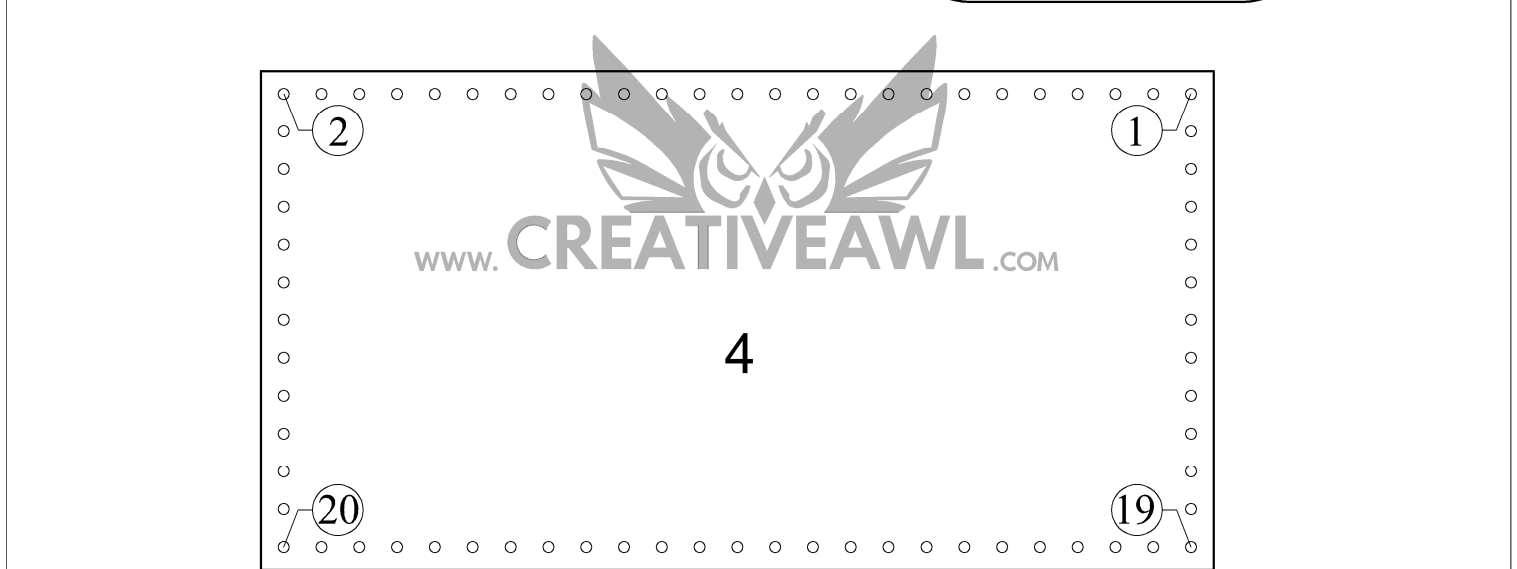
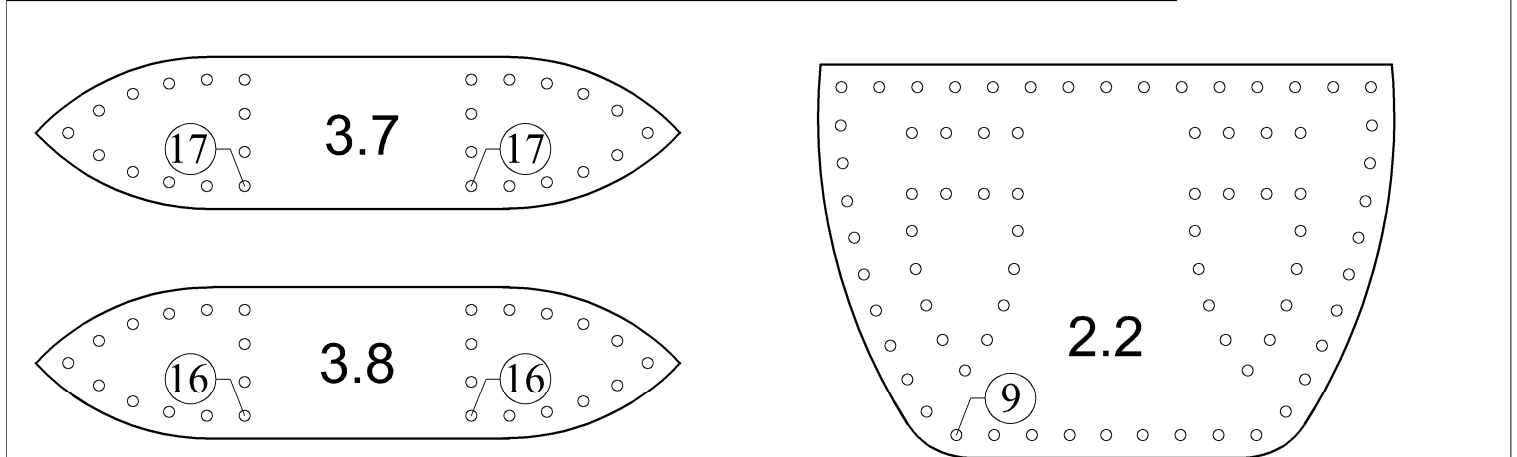
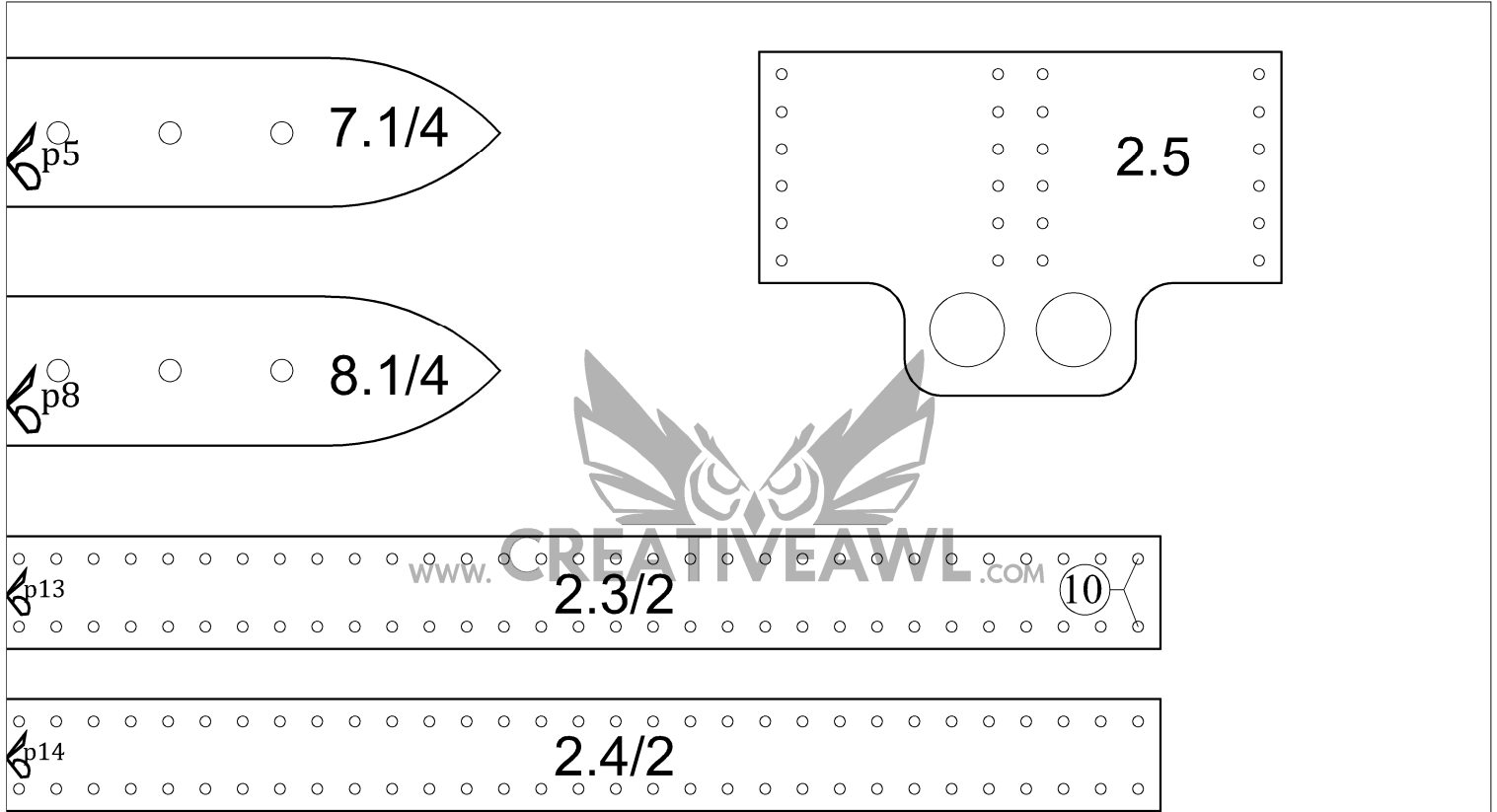
A4



Emily backpack



Emily backpack

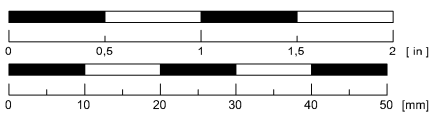


Emily backpack

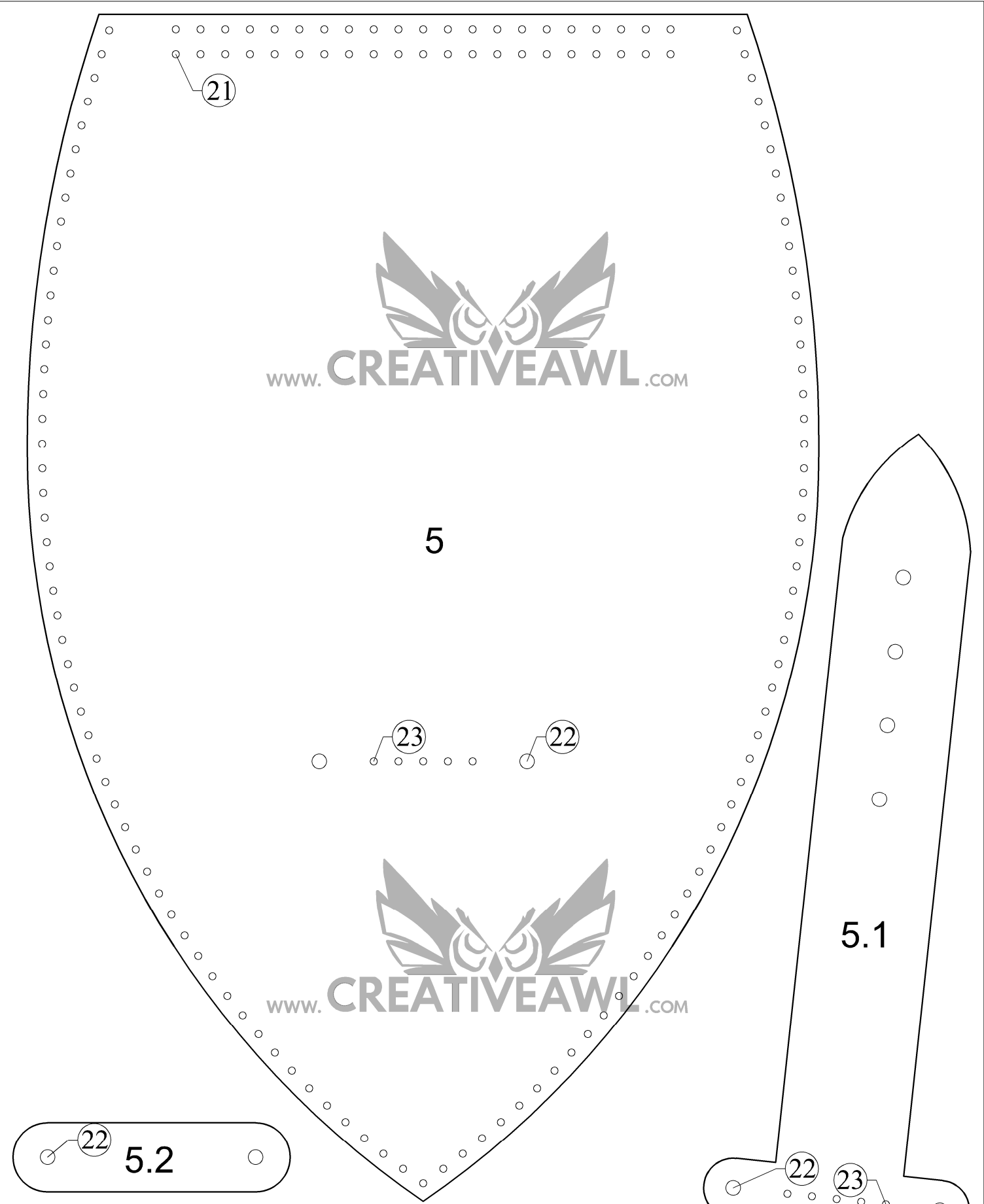


11 in
LETTER
8,5 in

A4



Emily backpack



www.CREATIVEAWL.COM

5

www.CREATIVEAWL.COM

5.1

5.2

Emily backpack

16

